

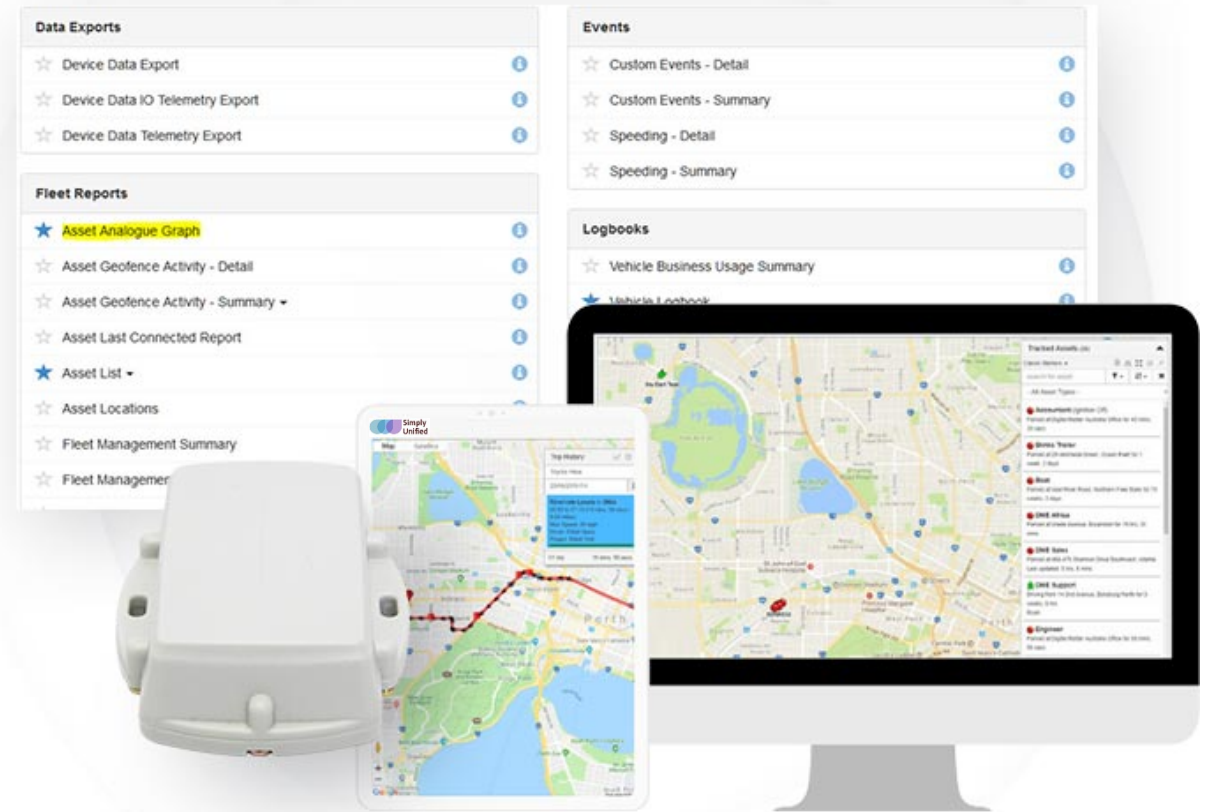
OVERVIEW

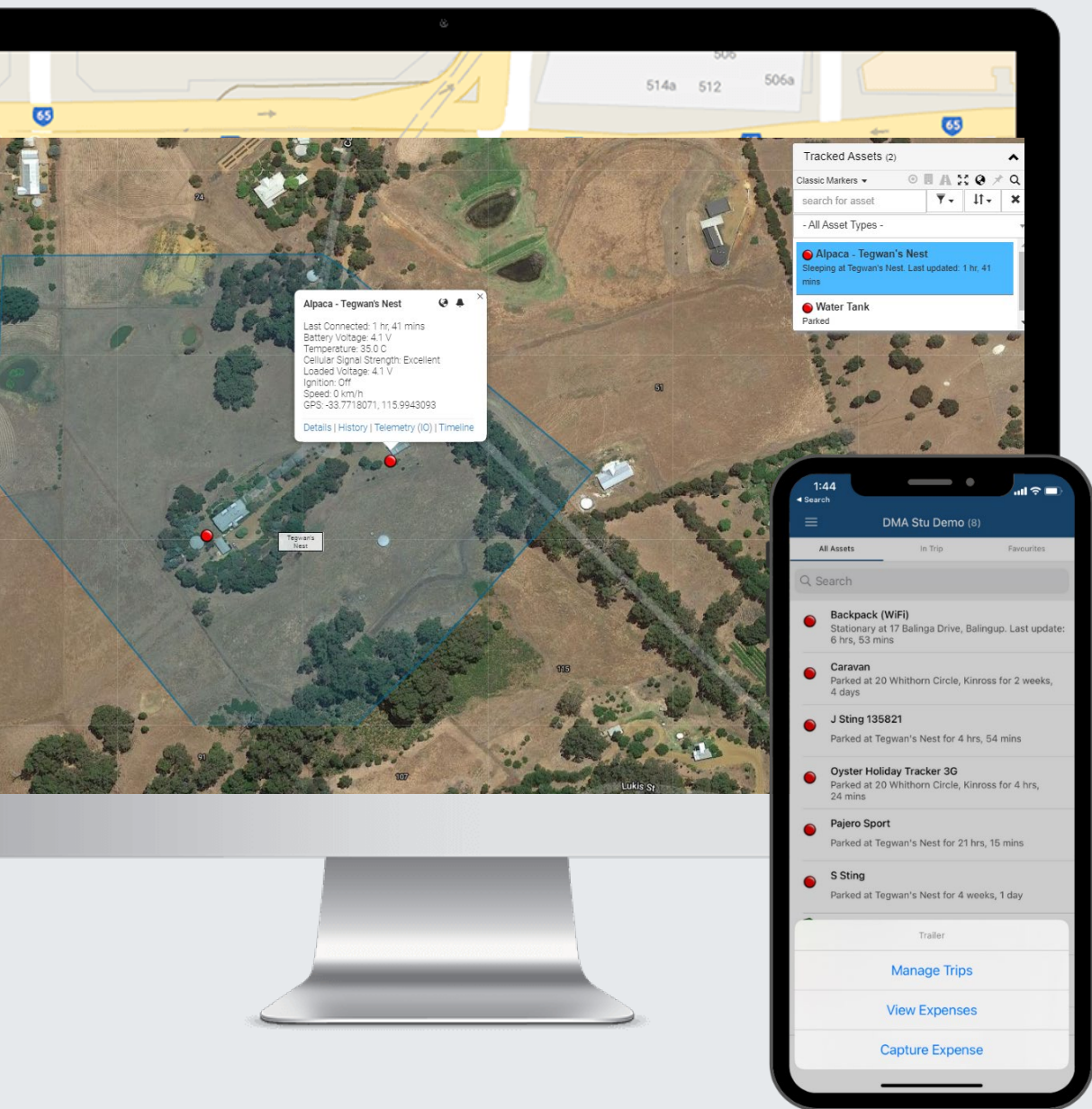
Simply Unified Tracking Platform



One Platform, Every Asset

Track and manage the assets that power your business with Simply Unified, our intuitive GPS Tracking Platform featuring Google Maps, powerful customizable reporting and alerts, remote device health monitoring, and more.

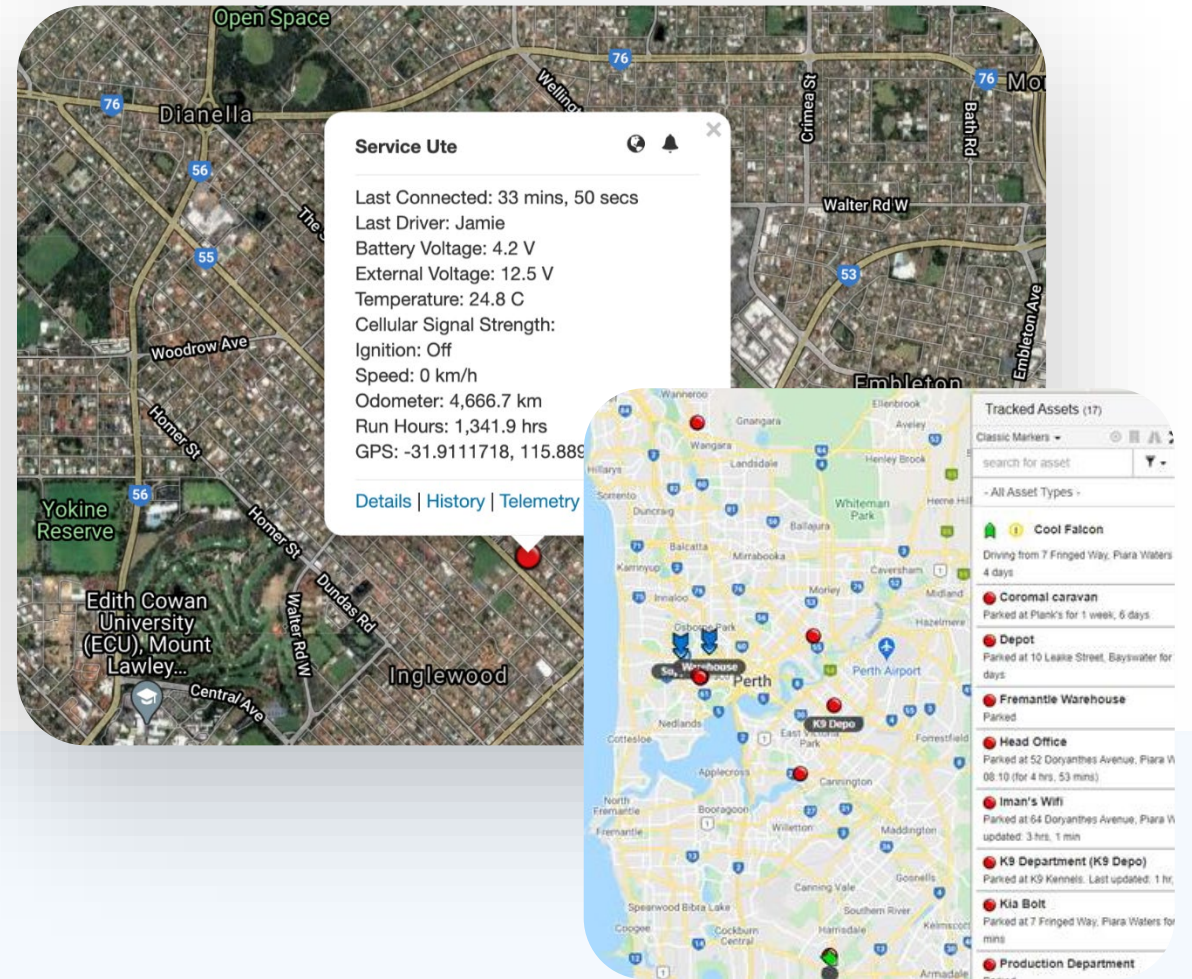




Available on Desktop, Tablet, or Mobile App



Location Tracking & Theft Recovery



Track & Manage Your Assets



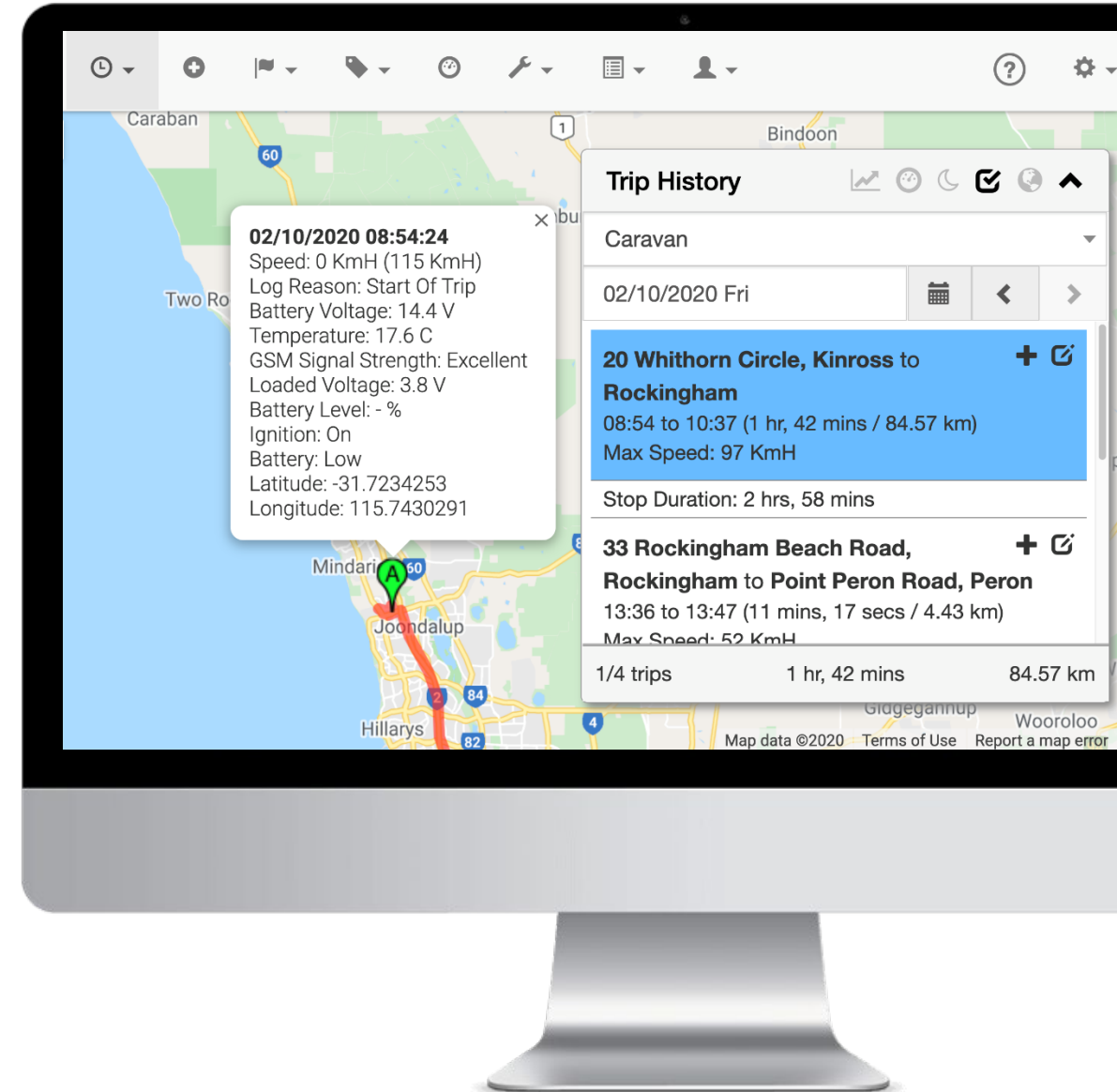
Location Tracking

Locate your assets in Google's Map, Terrain or Satellite Views.



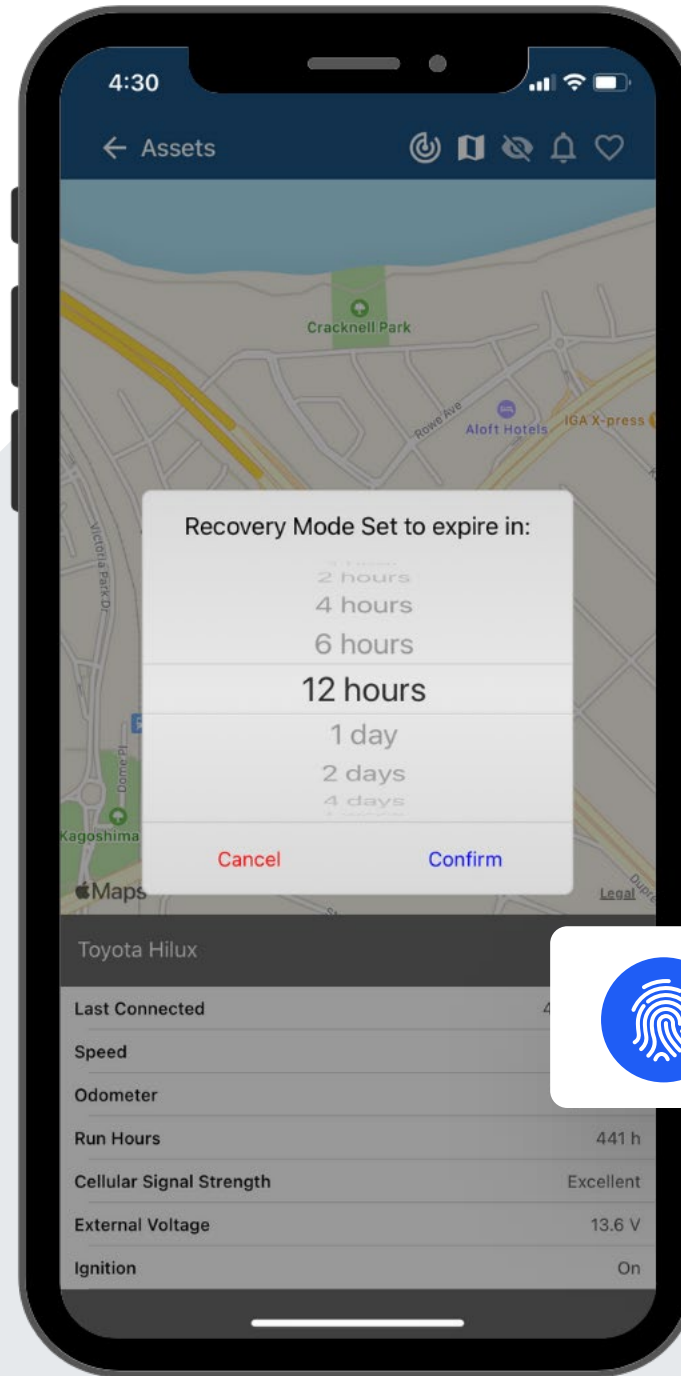
Trip History

Capture and view Historical Trip Data to monitor routes, mileage, idle time, average speed and more.



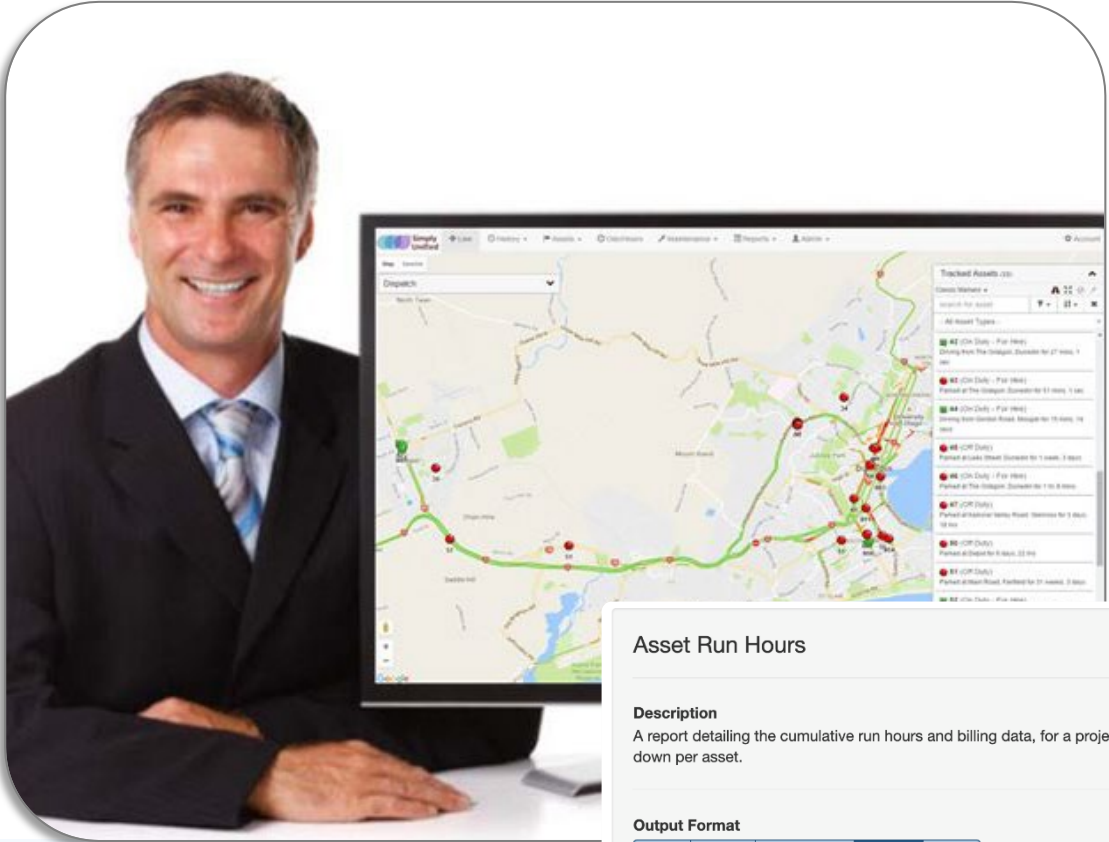
Recover Stolen Property

Quickly switch to **Recovery Mode** to activate real-time tracking in case of loss, theft or unauthorised use.



One-Touch to Recovery

Reporting & Alerts



Asset Run Hours

Description

A report detailing the cumulative run hours and billing data, for a project in a given date range. The report is broken down per asset.

Output Format

CSV Excel ExcelPivot **HTML** PDF

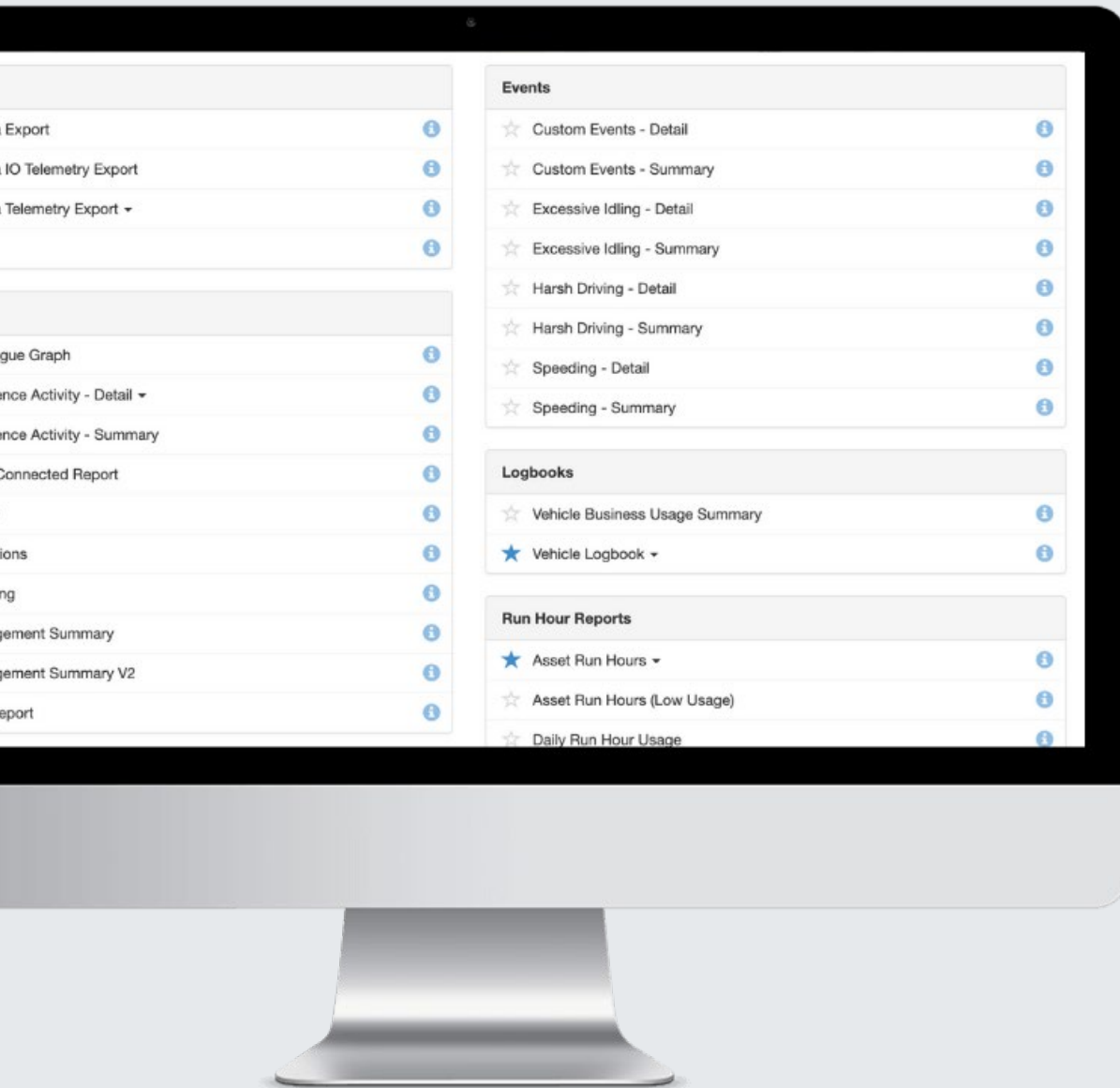
⚙️ Advanced Options ▾

Projects

Leave Blank to Select All Projects / Begin Typing to Select

Departments

Leave Blank to Select All Departments / Begin Typing to Select



Report on What Matters

Explore, customise, schedule and download vital reports for analysis, optimisation and billing.

Select from common reports such as Asset Utilisation, Trip List, Low Battery, and Speeding, or create your own.



Configure Actionable Alerts

Set notifications based on exceptional events and specific asset behaviour.

After Hours Movement



Accident Detected



Speeding Alert



Create Alert Wizard

Type of Alert ⓘ

After Hours Usage

After Hours Usage

Ignition On

Movement Detected

Panic / Duress Button Pressed

Accident / Rollover Detected

Speeding (Once per trip)

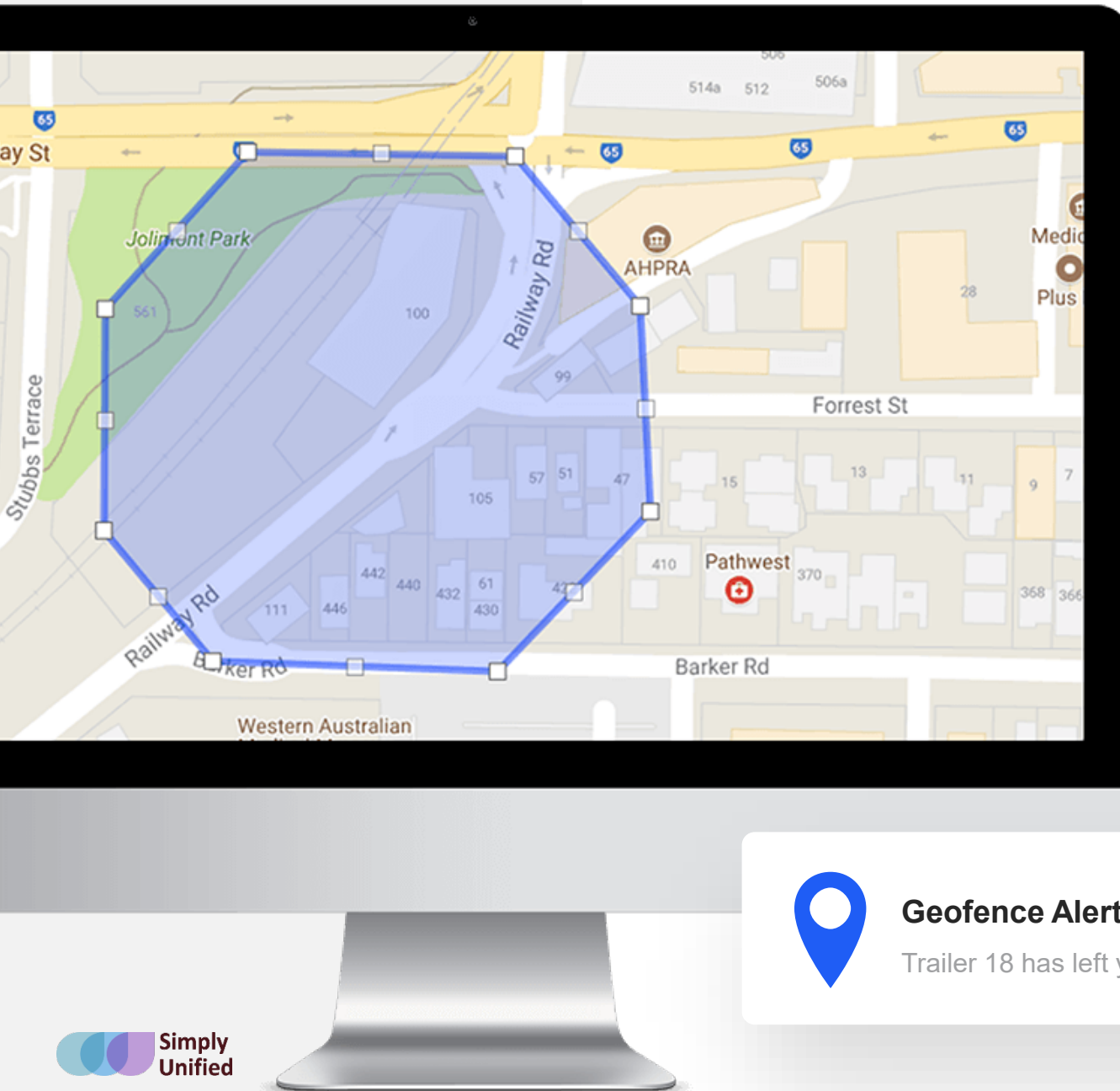
External Power Removed

Low Device Backup Battery Voltage

Low External Voltage (Vehicle Battery Voltage)

Geo Fence Alert

Remora Low Battery



Set Boundaries

- Create “Digital Boundaries” with user-friendly Geofencing tools.
- Quickly bulk upload multiple Geofences with your own longitude, latitude, radius and priority data.
- Configure breach alerts if an asset enters or leaves your boundary.
- Advanced Geofence Download to Device options also available.

Visualise Asset Utilisation

Qualify asset working time versus idling time.
Understand where, and how your assets are
being used to optimise usage, reduce
downtime, and increase asset's useful life.



Asset Run Hours for All Projects - 01/09/2020 to 23/09/2020

Asset Type	Asset	Description	Department	Distance (km)	Billable Amount (Distance)	Run Time (hrs)	Billable Amount (Run Time)
Low Value Asset	Senior Hardware Engineer			539.18	0.00	35.29	0.00
Total - Low Value Asset (1)				539.18	0.00	35.29	0.00
Asset Type	Asset	Description	Department	Distance (km)	Billable Amount (Distance)	Run Time (hrs)	Billable Amount (Run Time)
Point of Interest	Depot			0.00	0.00	0.00	0.00
	Fremantle Warehouse			0.00	0.00	0.00	0.00
	Head Office			216.93	0.00	8.42	0.00
	Production Department			0.00	0.00	0.00	0.00
	Sales Dep			0.00	0.00	0.00	0.00
	Service Centre			0.00	0.00	0.00	0.00
Total - Point of Interest (6)				216.93	0.00	8.42	0.00
Asset Type	Asset	Description	Department	Distance (km)	Billable Amount (Distance)	Run Time (hrs)	Billable Amount (Run Time)
Pump	Pump (Airbnb)			0.00	0.00	0.00	0.00
Total - Pump (1)				0.00	0.00	0.00	0.00
Asset Type	Asset	Description	Department	Distance (km)	Billable Amount (Distance)	Run Time (hrs)	Billable Amount (Run Time)
Temp Sensor	Cool Falcon			508.91	0.00	117.54	0.00
Total - Temp Sensor (1)				508.91	0.00	117.54	0.00
Asset Type	Asset	Description	Department	Distance	Billable Amount	Run Time	Billable Amount (Run Time)

Schedule Preventative Maintenance & Job Reminders

Avoid costly repairs and reduce equipment and vehicle downtime with timely Maintenance Alerts and Job Reminders based on time, distance travelled, or run hours.

10km

6mth

50hr

Create Maintenance Schedule

The Maintenance Schedule dictates **when** the next maintenance job will be actioned. Not all the conditions are required. A **combination of criteria** (Odometer, Run Hours, Secondary Run Hours and Calendar) can be used. Whichever of the **first** will result in a maintenance job being created for the asset.

☐ Secondary Unit Maintenance **i**


☒ **Odometer**
☒ Use Absolute Value **i**

Action Interval (kms)

Reminder Notice Period (kms before action) (optional)

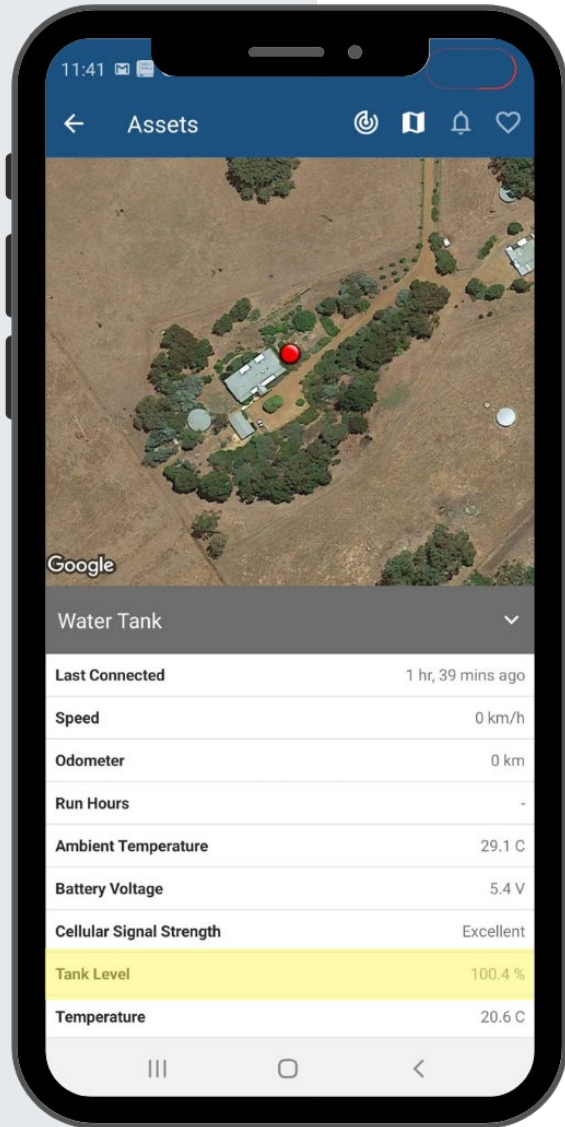
☐ Run Hours

☐ Calendar



Maintenance Alert

3k Oil Change Company Van 18
Safety Inspection – Check Tyres



Monitor Sensor Data

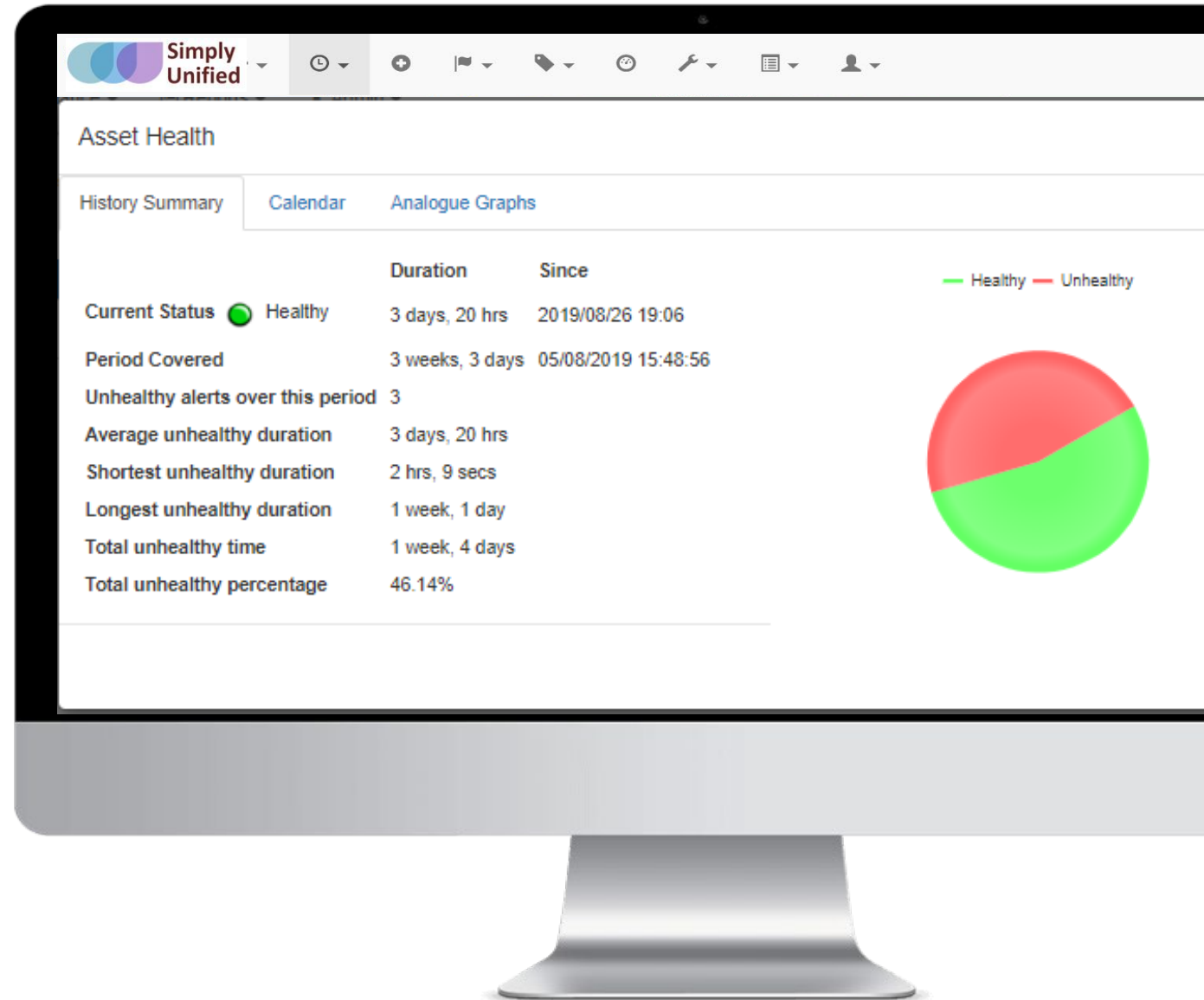
Report on integrated sensor data such as temperature, humidity, tank levels, door open/close, and more.



Tank Level: 96.8%

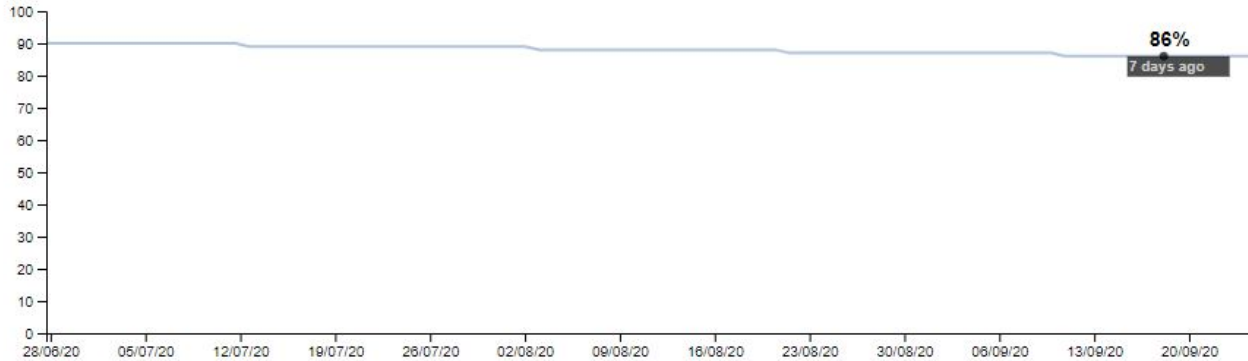
Configure & Manage Asset Health

See “healthy” and “unhealthy” assets at a glance based on sensor data and user-defined events or behaviour, such as temperature changes, tank levels, humidity, pressure, and more.



Battery Management: Head Office (237782)

Battery Percentage (%)



Device Counter Date: 18/09/2020 03:13 (7 days ago)

Avg. Time to First Fix: 10.779 seconds

GPS Fix Time (successful/failed): 00:10:33:28 / 00:00:26:00

GPS Fixes (successful/failed): 3526 / 26

Uptime: 46 weeks, 11 hrs

Accelerometer Wakeups: 549

Upload Time (successful/failed): 00:15:15:16 / 00:00:35:00

Uploads (successful/failed): 4357 / 9



Low Battery Alert

60 Days Remaining

Monitor Battery Life & Usage

Ensure your assets are never left unprotected due to dead batteries with accurate battery life monitoring, remaining life predictions, and low battery alerts.

* Applicable to our battery-powered devices only.

Monitor Driver Behaviour

Monitor speeding, harsh acceleration, braking and cornering, idle times and more to improve driver safety and prevent unnecessary wear on vehicles.



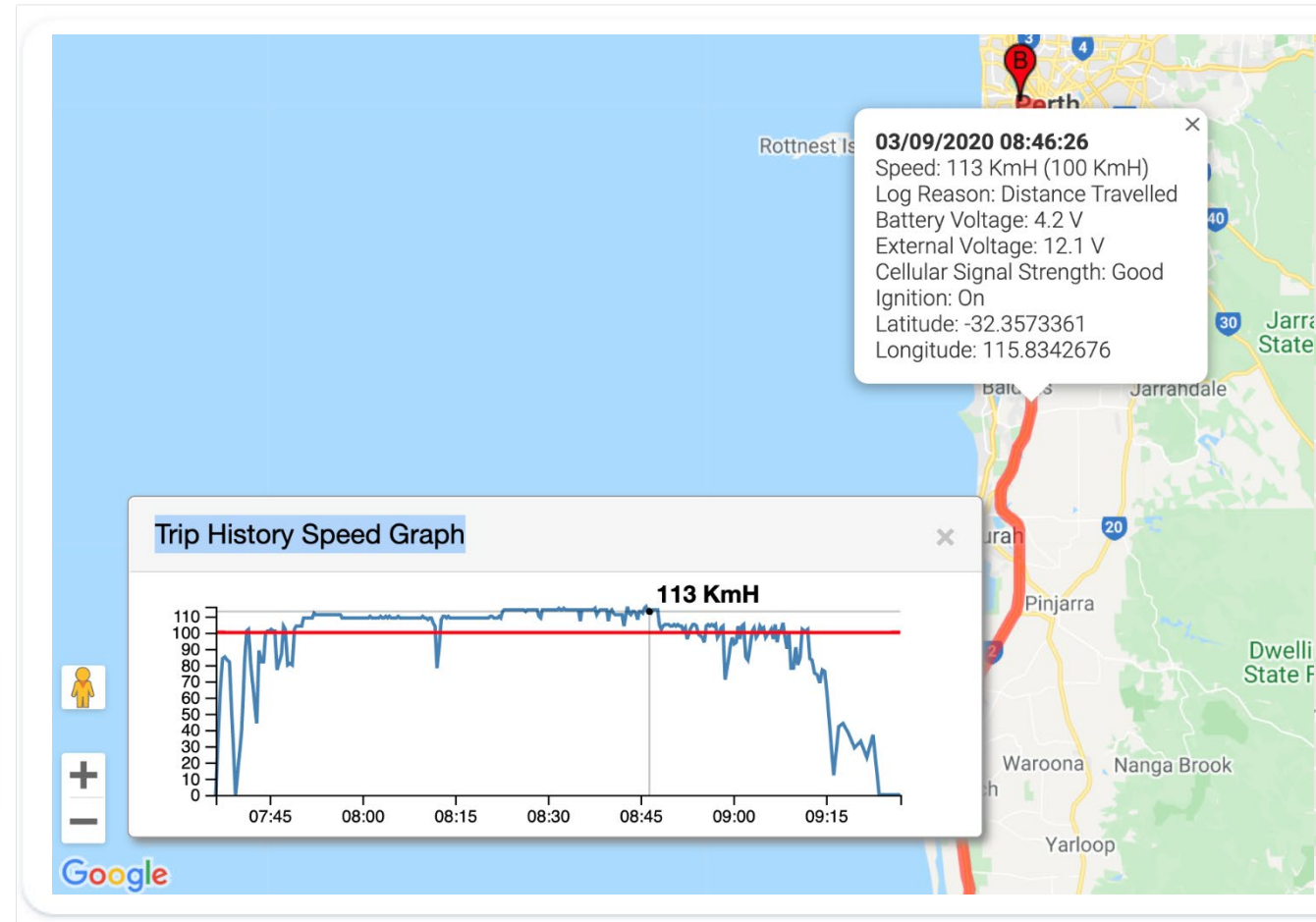
Excessive Idling



Accident Alert

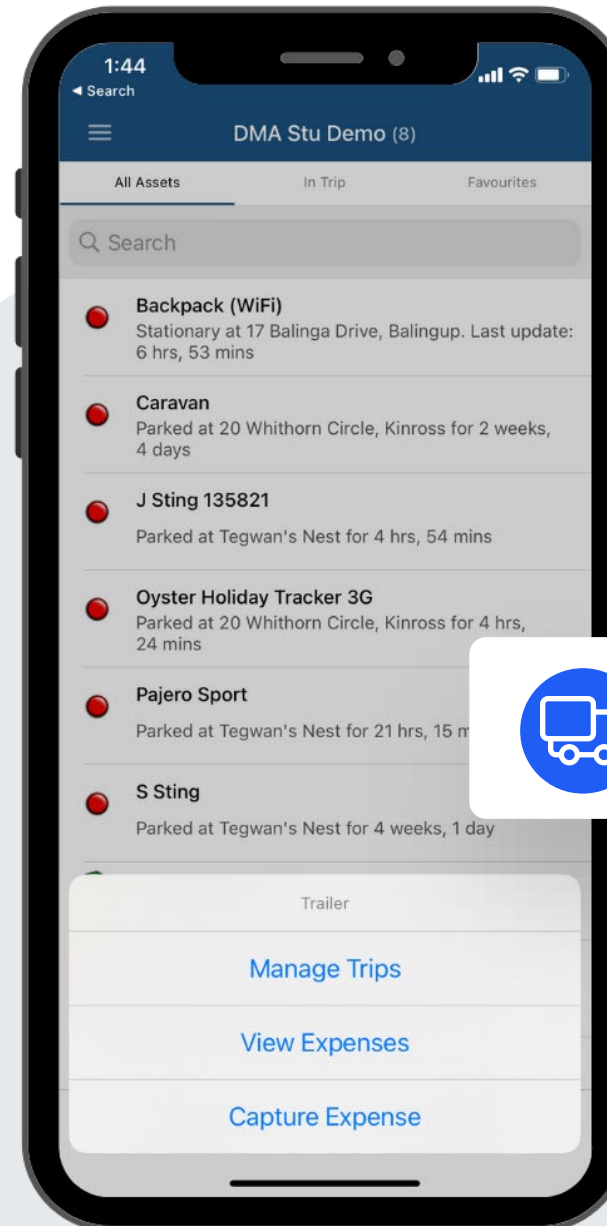


Speeding Alert

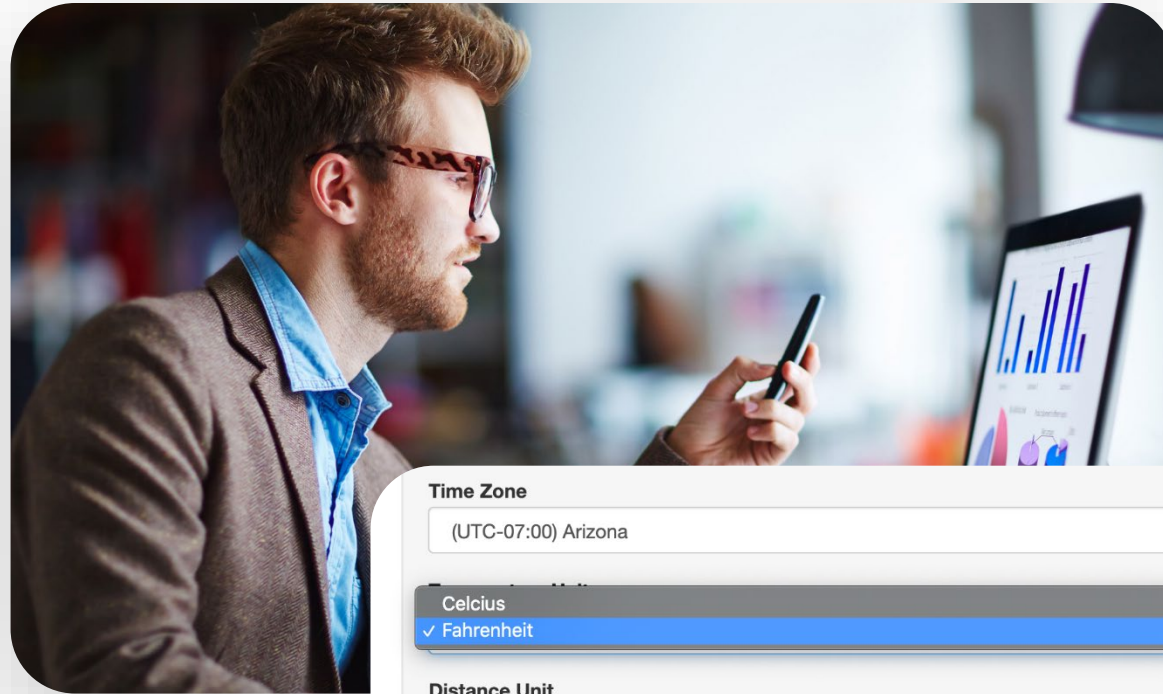


Capture Expenses

View all trips and easily mark as “Business” or “Private” to streamline **Logbooking**, **Fringe Benefit Tax (FBT)** and **Road User Charge** reporting. Provide proof of service for accountability and invoicing.



Flexibility & Control



Time Zone

(UTC-07:00) Arizona

Temperature Unit

Celcius

✓ Fahrenheit

Distance Unit

KM

Date Format

dd/mm/yyyy

Group Separator

Comma (,)

Decimal Separator

Point (.)

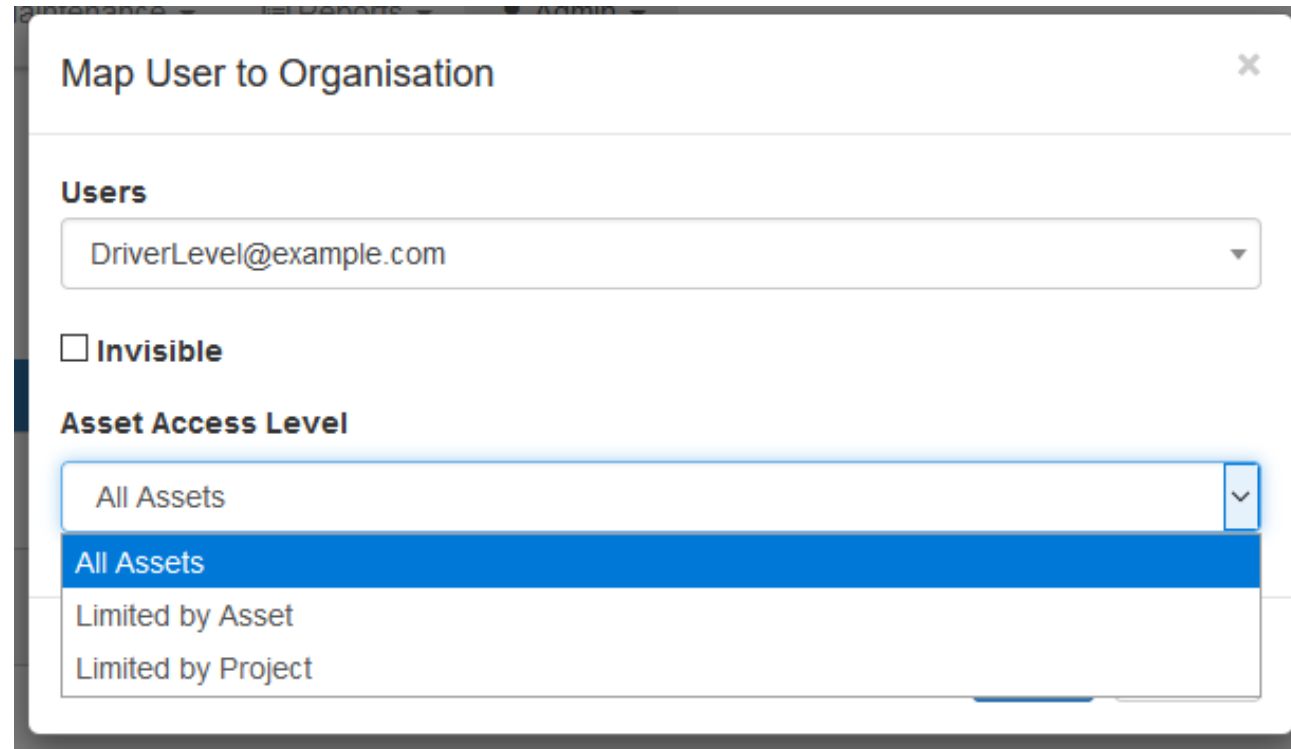
Duress Alert ⓘ

Sad Trombone

▶ Play

Manage Users & Permissions

- Quickly add and invite new users.
- Create and assign User Roles.
- Manage permissions and control user access to specific features, reports and assets.
- Set up Partner or Subsidiary Organisations.



The screenshot shows a dialog box titled "Map User to Organisation" with a close button (X) in the top right corner. The dialog is divided into two main sections. The first section, labeled "Users", contains a dropdown menu with the email address "DriverLevel@example.com" selected. Below this is a checkbox labeled "Invisible" which is currently unchecked. The second section, labeled "Asset Access Level", contains a dropdown menu with "All Assets" selected. This dropdown is open, showing a list of three options: "All Assets" (highlighted in blue), "Limited by Asset", and "Limited by Project".

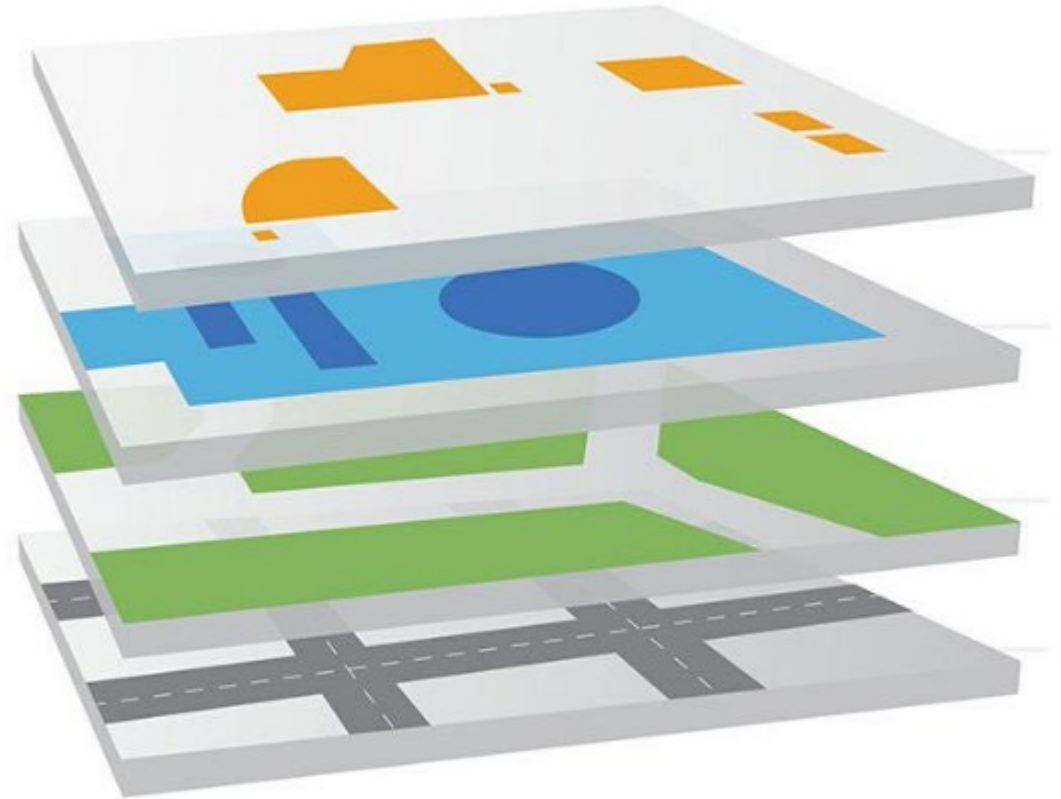
Add Custom Map Overlays

Integrate your own custom map overlays to view your assets over timely aerial images.

Custom Map Overlays are particularly beneficial for Construction, Oil and Gas, and Mining sites, as satellite data over these locations may be outdated.



Did you know: Satellite data on Google Maps is typically 1 - 3 years old? Google Earth gathers data from various satellite and aerial photography sources, and it can take months to process, compare and set up the data before it appears on Google Maps.



Global Support

Derive maximum value from Simply Unified by exploring our knowledge base of over **600 support articles** or speak directly with our team of support engineers for guidance.



Paul Delaney
Simply Unified CEO

Hard-Wired Tracking Solutions



SU-3300

The SU-3300 simply plugs into the vehicle's OBDII port, meaning zero-install cost. Perfect for rental fleets where a hard-wired install is not desirable.

[LEARN MORE](#)



SU-2700

The SU-2700 is affordable and packed with features including digital inputs and outputs, driver behaviour monitoring and optional driver ID and remote immobilisation.

[LEARN MORE](#)



SU-1200

The SU-1200 tracking device has several inputs and outputs providing a quality solution for virtually any application. Optional

Satellite Connectivity

Add the [Iridium Edge](#) device to your SU-1200 to provide Global Coverage (additional fees and charges apply)

[LEARN MORE](#)



SU-6200

The SU-6200 is a compact 4G GPS tracking device with a variety of inputs and outputs to cater for the most demanding applications. Its rugged housing is IP67 rated to withstand the harshest environments, without sacrificing tracking and communications performance.

[LEARN MORE](#)

Battery Powered Tracking Solutions (4G Cat M1 Lte)



SU-6500

The SU-6500 is a small, lightweight and robust battery-powered tracking device.

Available in either GPS or Wi-Fi look-up the SU-6500 is ideal for tracking small assets

[LEARN MORE](#)



SU-6800 Mini

The SU-6800 Mini is a compact, rugged GPS tracking device that has been designed for tracking containers, trailers, skip bins, and other assets where super-long battery life is required without sacrificing the frequency of updates and performance.

[LEARN MORE](#)



SU-6800-2

The next generation SU-6800 is here – supercharged and more powerful than ever.

The SU-6800-2 is an IP67 rated, rugged 4G Cat-M1/Nb-IoT GPS device designed for tracking non-powered assets where super-long battery life is required without sacrificing the frequency of updates and accuracy performance

[LEARN MORE](#)



SU-6600

The SU-6600 is a super-smart, battery-powered tracking device in a rugged IP67 housing. Using the GPS and optional Wi-Fi and Phone Tower look-up, the SU-6600 will provide locations, even where there is no GPS signal available.

[LEARN MORE](#)

Battery Powered Tracking Solutions (Satellite Based)



SU-6400

The SU-6400 battery powered satellite asset tracker has near-global coverage at an affordable price. Housed in a compact, rugged enclosure, SU-6400 battery powered satellite asset tracker supports location tracking and two independent alarm inputs.

[LEARN MORE](#)



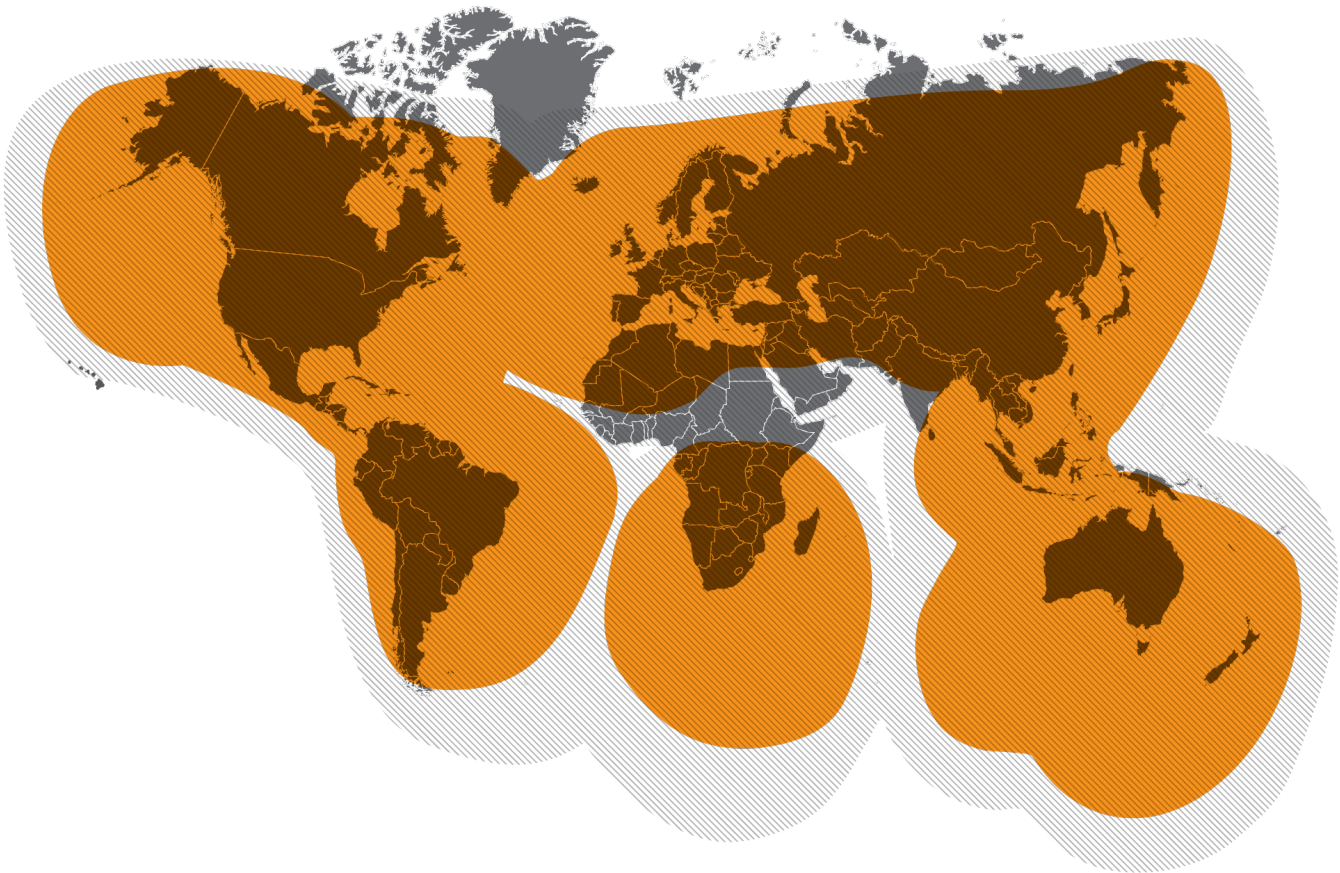
SU-6300

The SU-6300 Solar Satellite Tracker. It is the next generation of Globalstar's industry-acclaimed SmartOne product line.

Powered by solar energy, this IoT device provides excellent remote monitoring and tracking capabilities, utilising one of the fastest and most modern satellite networks in the world.

[LEARN MORE](#)

Satellite Based Coverage Map



Let's Talk Tracking

Get the technology, tools, and support you need to grow your business.

Contact Details



1300 599 540



sales@simply-unified.com.au



simply-unified.com.au



**Unit 8, 3 Blackburn Drive
Port Kennedy
WA 6172**



www.myionu.com.au
1300 30 22 52